



# OAK VIEW & KANAPAHA MIDDLE SCHOOL CONTROLS

**PROJECT LOCATION:** Oak View & Kanapaha Middle - Gainesville, Florida  
**EXPERIENCE OF:** Mitchell Gulledge Engineering, Inc  
**ROLE IN PROJECT:** Prime Professional - MEPF Design

## CONSTRUCTION COST

\$600,000

## COMPLETION DATE

June 2019

## PROJECT STAFFING

**Project Manager:**

Craig Gulledge, PE, CxA

**Mechanical Lead:**

Ark Szczurowski, PE, CxA

**Electrical Lead:**

Andy McCaddin, PE

## PROJECT OWNER

School Board of Alachua County

Dennis Griffith

3700 NE 53<sup>rd</sup> Ave

Gainesville, FL 32609

352.955.7400

griffithdl@gm.sbac.edu

## PROJECT ENGINEER

Mitchell Gulledge Engineering, Inc.

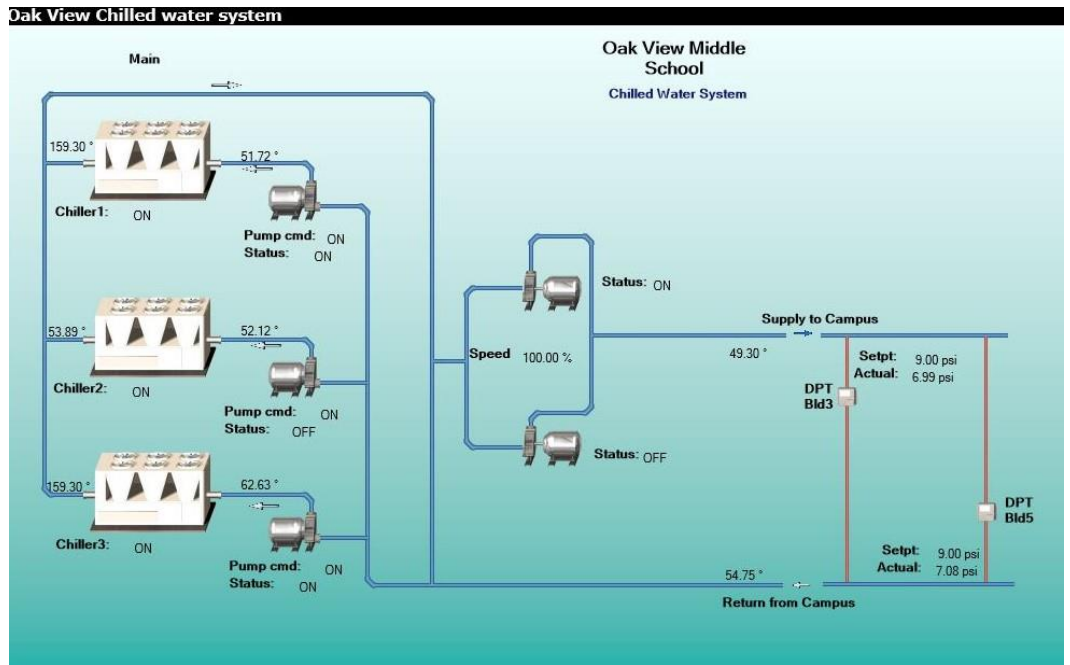
Craig Gulledge, PE, CxA

210 SW 4<sup>th</sup> Ave

Gainesville, FL 32601

352.745.3991

cgulledge@mitchellgulledge.com



## PROJECT SUMMARY:

The School Board of Alachua County hired Mitchell Gulledge Engineering to design a new building automation system for the Oak View Middle and Kanapaha Middle Schools. Both schools have long suffered with low energy efficiency because of aging pneumatic controls for the heating hot water and chilled water systems. The project included new controls for over 15 building between the two campuses.

The facilities service department requested that we carefully consider construction phase implementation so that the impact on school operation is minimized. After we were given notice to proceed with the design, a thorough analysis of the design and estimated construction schedule allowed the Mitchell Gulledge Engineering team to conclude that the best possible schedule would include an expedited design phase so that the winter holiday period could be utilized during the construction phase. With a truncated design time table, Mitchell Gulledge Engineering completed 50% and 100% Construction Documents ahead of schedule with no EH&S review comments or deficiencies.

Our team provided bid phase services under very tight schedule constraints to hard-bid to local controls vendors. The Mitchell Gulledge Engineering team takes pride in providing quality engineering design, but we are especially adept at providing quality service for project development, bid phase services, and construction oversight. Our ability to keep the client needs in focus while visualizing a variety of solutions is the key to maintaining an agile approach to our consulting efforts. The project was designed on an expedited schedule and hard bid on budget.

Our team ensures during the design process that the requirements and preferences for facilities service clients are met. Mitchell Gulledge Engineering provided detailed cost estimates to validate budgeting. We value owner feedback and input and we give careful consideration to a variety of solutions during design implementation.

